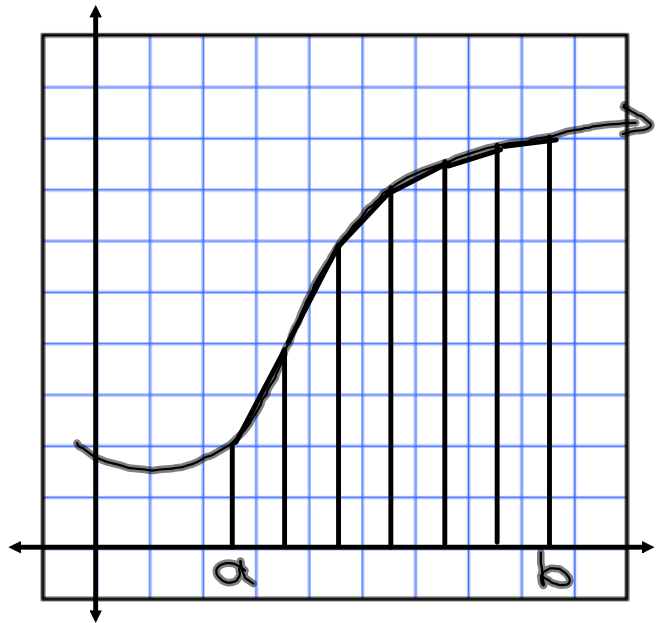
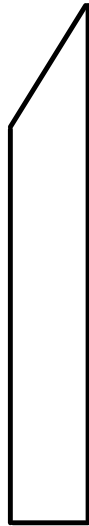


Calculus AB

4-6

Trapezoidal Rule

Area of a Trapezoid -



Use both the Trapezoidal Rule and the Midpoint Rule with $n = 4$ to approximate each definite integral. Then compare to the calculator approximation. (pg 316)

4) $\int_2^3 \frac{2}{x^2} dx$

Assignment:

Pg. 316

1, 11, 17

Use both the Trapezoidal Rule and the Midpoint Rule for each.